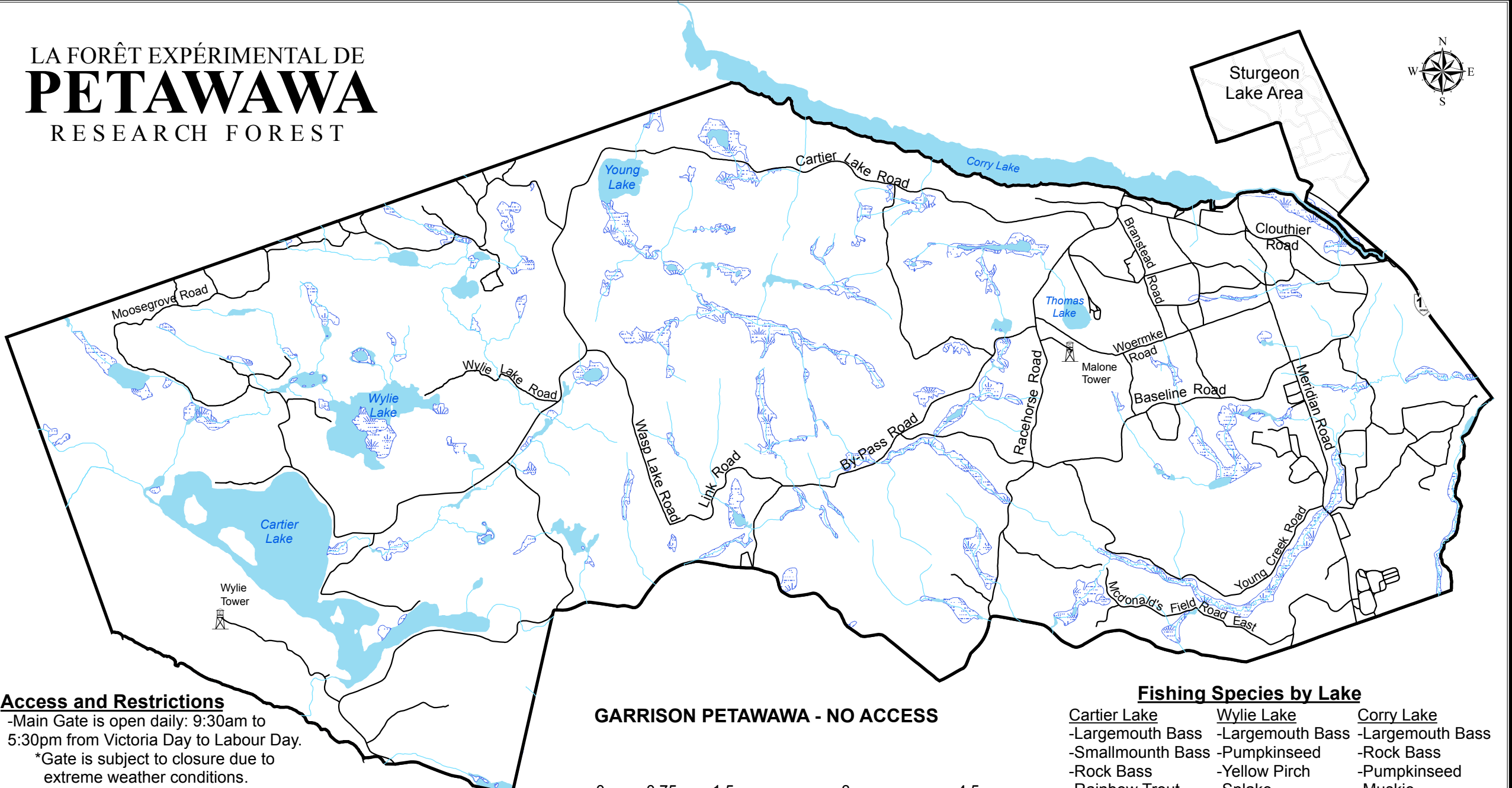


LA FORÊT EXPÉRIMENTAL DE  
**PETAWAWA**  
 RESEARCH FOREST

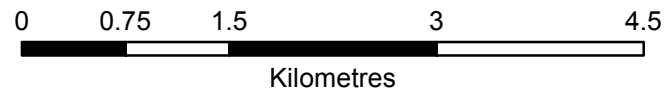







**Access and Restrictions**

-Main Gate is open daily: 9:30am to 5:30pm from Victoria Day to Labour Day.  
 \*Gate is subject to closure due to extreme weather conditions.

- No fires
- No camping
- No ATVS or dirt bikes
- No hunting
- No building of permanent structures
- No dumping

**GARRISON PETAWAWA - NO ACCESS**



 Towers
  Streams
  Roads
  Lake
  Wetland

**Fishing Species by Lake**

<u>Cartier Lake</u>	<u>Wylie Lake</u>	<u>Corry Lake</u>
-Largemouth Bass	-Largemouth Bass	-Largemouth Bass
-Smallmouth Bass	-Pumpkinseed	-Rock Bass
-Rock Bass	-Yellow Perch	-Pumpkinseed
-Rainbow Trout	-Splake	-Muskie
-Pumpkinseed	<u>Young Lake</u>	-Yellow Perch
<u>Thomas Lake</u>	-Pumpkinseed	
-Pumpkinseed	-Yellow Perch	
-Yellow Perch		

The Petawawa Research Forest accepts no liability for any inaccuracies displayed on this map.